



Customized ISO9001 Aluminum/ Stainless Steel Metal Stamping Parts For Medical Parts

Specifications :

Price	Contact us
Brand Name	ETCN
Place of Origin	Shanghai
Min.Order Quantity	100
Payment Terms	T/T,L/C,D/P
Supply Ability	7 days
Delivery Detail	3days--7days
Packaging Details	Wooden case or wooden pellets depended on clients' require

Detail Introduction :

Metal Stamping Parts

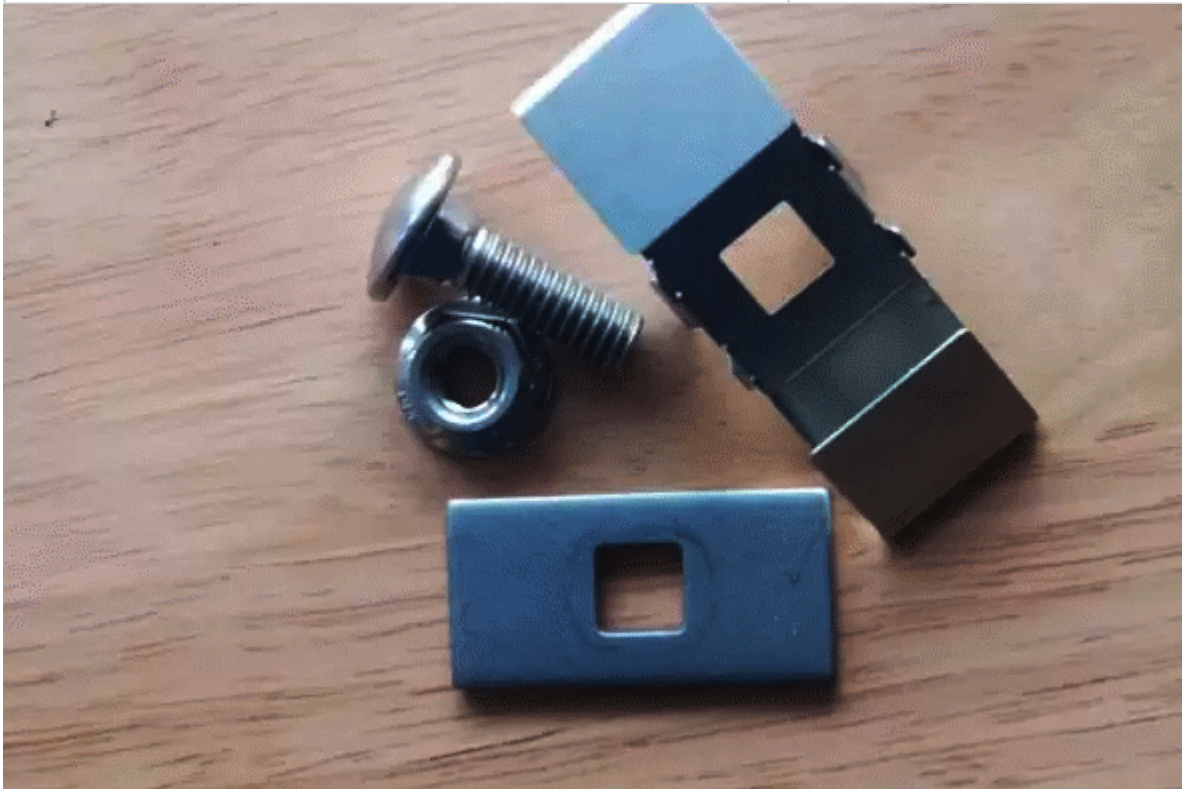
Metal Stamping Parts

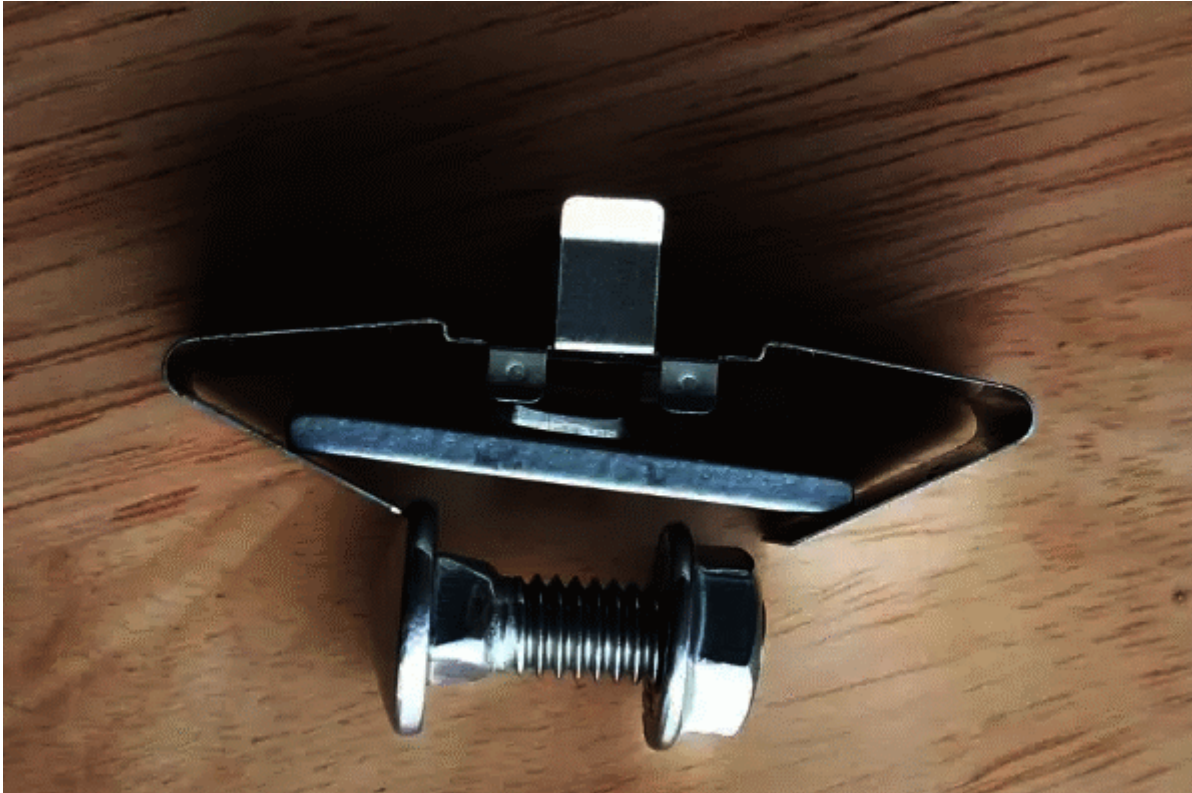
PRODUCT DETAILS

1. Product: Metal stampings with ISO9001 certificated,.
2. Samples are available.
3. Processing: Stamping, bending, machining, surface treatment
4. Application: ELECTRONICS+APPLIANCE
5. Service: Customized made according to your drawings and requirements

Material available	Brassl
	Cooper
	Bronze
	Aluminum
	Stainless steels
Surface treatment	zinc/nickel/chrome/tin plating(colour or natural), Galvanization, anodizing, oil spraying, powder coating, polishing, passivate, brush, wire drawing, painting, etc.
Metal processing available	Tooling making, Prototype, Cutting, Stamping, Welding, Tapping, Bending and Forming, Machining, Surface treatment, Assembly

Specification	OEM/ODM, as per client' s drawing or sample
Certificate	ISO9001:2008/SGS
Tolerance	Stamping parts: 0.01-0.1mm, CNC machining parts: 0.1-0.002mm
Software	Auto CAD, Soliworks, PDF
Stamping parts Application	electronics, automotive parts, railroad parts,medical parts, marine parts, lighting parts, pump body, valve parts,architectural parts and furniture parts so on





Company overview

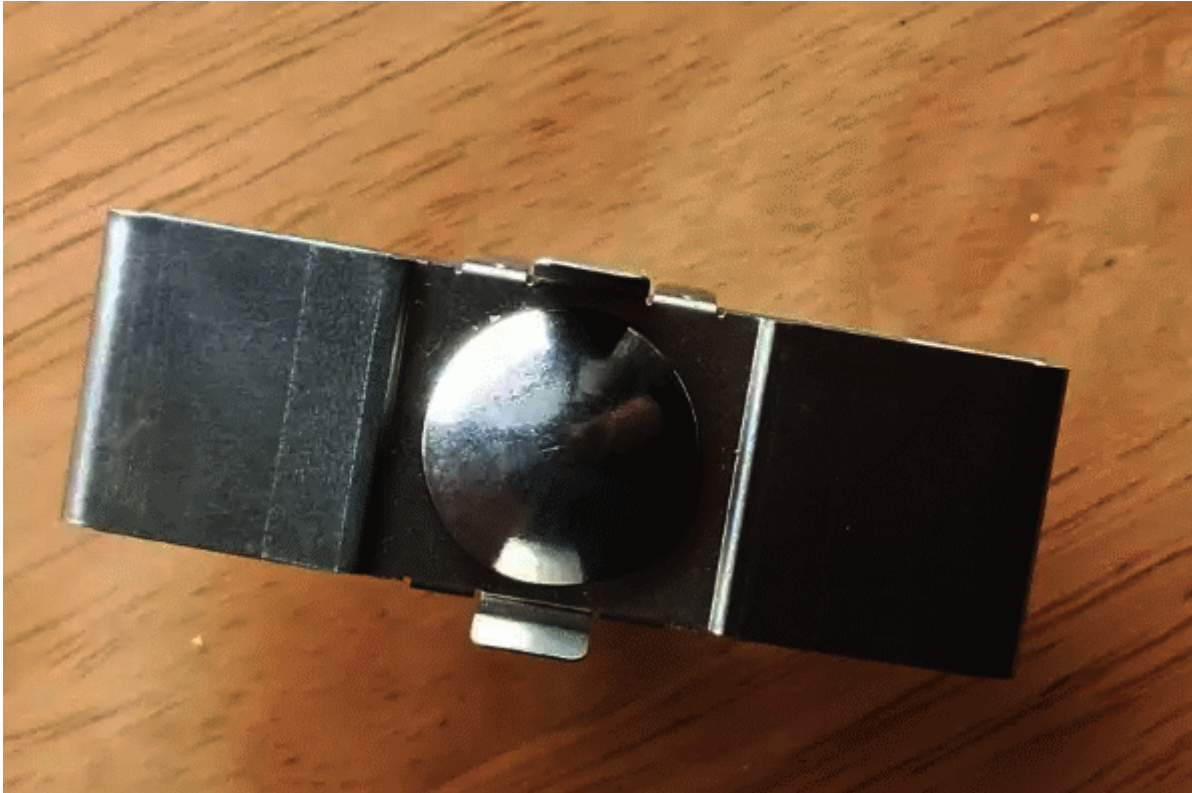
Our company is a specialized provider of metal forging, machining, stamping customized parts and Stainless Steel Braided Hose. We have a complete in-house manufacturing system - from products design, making, testing, to parts processing and assembly. With many years of export experience, we have established a long-term cooperation relationship with many customers in Europe, America, Middle East and South-east Asia and all over the world.

All our products are manufactured under Precision manufacturing. Owning various types of precision automatic equipments: 120 sets of CNC Lathe, CNC machining centers, forging and Stamping Machines, thread rolling machines and other processing machines, those have a monthly capacity of 3,000,000 units, to match your volume orders .There are also lots of testing equipment for quality assurance. Such as: three dimensional, optical Projector, Surfagauge, sclerometer, Tension tester, etc.



Quality Control

All of our engineers and Q/C guys concern and active in every engineering and manufacturing stages by ISO standard. Available materials: brass, mild steel, steel alloy, stainless steel and iron, aluminum, zinc; Available surface finish: fine polish, electrolyte-polish, chrome, zinc plating, nickel plating, aluminum oxidation. Available processes: metal processing includes machining, stamping, die-cast and hot-press, expert plastic injection, and surface plating. OEM orders are welcome contact us now. If you have new project please send your 2D or 3D drawing(STP,IGS)file to us, we will be quote to you in 24hours.

**FAQ**

Q1.Are you a factory or trade company?

A1:We are a factory located in China. Welcome to visit our factory.

Q2.How to ensure that every process's quality?

A2:Every process will be checked by our quality inspection department which insures every product's quality. In the production of products,we will personally go to the factory to check the quality of products.

Q3.How long is your delivery time?

A3:Our delivery time is generally 30 to 45 days. Or according to the quantity.

Q4.What is your main products?

A4:Our main products are cnc machining parts and metal stamping services.

Q5.Can you provide a sample?

A5:Sure, Our sample is provided after receiving the tooling cost and courier fees.



